

## BeeSure™ LEVEL SENSING SYSTEM

### SPEED

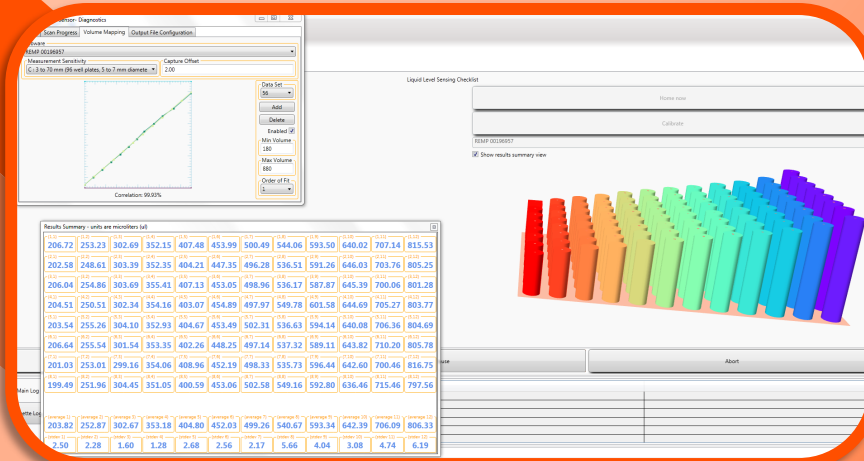
96-well scans in 30 seconds. 384-well scans in 2 minutes at standard precision (+/- 0.1mm)

### VERSATILE

Small footprint and automated data generation to fit anywhere in your workflow

### FLEXIBILITY

Quickly scan in 96 or 384 well formats on plates, tubes, or vials on liquids or solids





### General Specifications

<b>Max Vessel Height</b>	51mm in 96 or 384-well formats
<b>Loading</b>	Portrait or Landscape orientations
<b>Software</b>	BeeSure App and .NET API upon req.
<b>Dimensions</b>	276.9mm, 226.1mm, 495.3mm (H, W, D)